



LS&MP Louis Stokes Alliance
for Minority Participation
THE TEXAS A&M UNIVERSITY SYSTEM

Bridge to the Doctorate Program **2009**



Letter from the Director

Howdy!

The Texas A&M University System Louis Stokes Alliance for Minority Participation (TAMUS LSAMP) is privileged to have received yet another funding award from the National Science Foundation, to support our fifth cohort of Bridge to the Doctorate (BTD) fellows.



The TAMUS LSAMP Alliance consists of three institutions, Texas A&M University serving as the lead institution, Texas A&M University – Corpus Christi and Prairie View A&M University. With graduate school success in mind, the Bridge to the Doctorate Program is aimed at increasing the quality and quantity of students interested in, academically qualified for, and matriculating into programs of doctoral studies in science, technology, engineering and mathematics (STEM) disciplines.

The TAMUS LSAMP BTD Program has served over 60 students through five cohorts. BTD Cohort I, hosted at Texas A&M University, began with 10 students and 100% matriculation into doctoral programs. BTD Cohort II, also hosted at Texas A&M University, was comprised of 12 students where 50% of the fellows entered doctoral programs. BTD Cohort III was hosted at Prairie View A&M University, where 16% of the 12 fellows matriculated into doctoral programs upon completion of their masters' program. Texas A&M University hosted BTD Cohort IV, where 50% of the 12 fellows entered doctoral programs with the remaining students in their final phase of their masters' programs. BTD Cohort V is currently underway at Texas A&M University, where the 12 fellows have exhibited outstanding progress in their graduate programs.

The Texas A&M University Louis Stokes Alliance for Minority Participation is building bridges to the doctorate and furthering careers and opportunities in STEM fields. We look forward to helping you make your dreams a reality.

Sincerely,

Karen Butler-Purry, Ph.D.

TAMUS LSAMP, Director and Co-PI

What is the Bridge to the Doctorate Program?

The **Bridge to the Doctorate (BTD)** fellowship program is an extension of the LSAMP, funded by the National Science Foundation (NSF). Designed to aid Master's level students in garnering the resources and information necessary to assist them in successfully matriculating into a Doctoral program, the BTD fellowship seeks to support students academically and professionally in achieving an advanced degree.

The Goal...

To increase the quality and quantity of underrepresented minority students successfully completing **STEM** graduate degree programs.



Jacob stands with his two mentors, Dr. Kelly Burmbelow (left) and Dr. Seth Guikema (center).

"The TAMUS-LSAMP Bridge to Doctorate Fellowship program is like no other. The fellowship allows me to focus solely on academics and research. It's carrying me through my master's degree work to the point where I am now in a position that the idea of pursuing a Ph.D. is actually possible."

Jacob Torres, BTD IV

Benefits

Among the benefits for BTM Fellows are:

- Funding for initial two years of graduate study, including a monthly stipend, graduate tuition/fees, and health insurance benefits
- A series of seminars and workshops aimed to help the BTM Fellow to thrive and succeed in their graduate program, and eventual matriculation into a Ph.D. program
- Mentoring assistance
- Academic enrichment
- Travel to conferences

"I have received so much from being a part of the LSAMP Program. I really gained a lot from the other students in the program who could identify with the day-to-day struggles of grad school."

Maxine Jones, BTM I



Maxine performs research for biomass conversion energy with her mentor, Dr. Mark Holtzaple.

Qualifications

- B.S. degree in a STEM major at an LSAMP Institution
- Minimum GPA of 3.0
- Acceptance as a first time graduate student into a Master's or Ph.D. Program at the TAMUS BTM hosting university
- U.S. Citizen or Permanent Resident

Professional Development **Activities**

A series of seminars and workshops are designed to assist BTD fellows in developing their readiness and increase eagerness to complete STEM doctoral degrees and by preparing them to take their places as leaders in interdisciplinary research and in academia. Below is a snapshot of seminars and workshops held for BTD Fellows.

Workshops/Seminars

How to be Successful in Graduate School

Description: This seminar focuses on the importance of reading, interacting with people, making choices to enhance value to others, and thinking positive about the students' chosen path.

Getting the Research Done

Description: This seminar covers the importance of staying energized, staying focused, and developing good habits throughout the course of graduate school and working on research.

How Research is Conceived and Developed

Description: This seminar covers choosing a research question relevant to the scientific community and integrating the scientific method into the research project developed to answer the question.

High Stakes Exams

Topics: What's the difference between qualifying and preliminary exams? Who is required to take these exams? Purpose for exam? Who administers these exams? Are there standard formats for the 2 exams? How to prepare for these exams?

Publishing Your Research

Description: This seminar covers the significance of publishing research in scholarly journals and conference proceedings. Overall approach to developing papers is covered as well as the process of submission.

The Professoriate as a Career Choice

Topics: What is it like to be a faculty member? Service? Funding? Teaching? Vacation? Family Life?

Personal Finance: Living Within Your Means

Description: This seminar covers the importance of personal finance for life in graduate school and beyond. Topics covered include budgeting software, credit scores, saving and investing, etc.

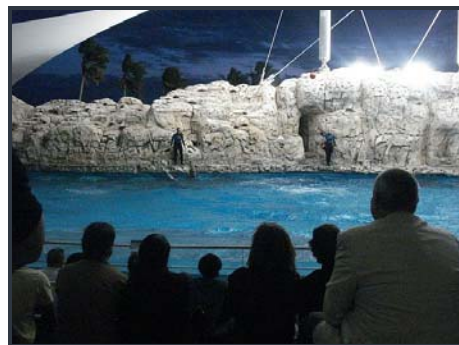
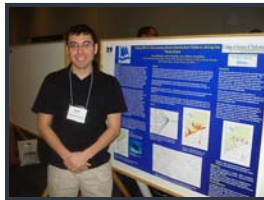


End of the Year Symposium

At the end of each academic year, the BTD fellows deliver presentations on their research to their fellow BTD peers and the LSAMP undergraduate research students. It provides an opportunity for the BTD fellows to hone their presentation skills as well as gives their peers insight into state of the art research being conducted.

Annual TAMUS LSAMP Symposium

The Annual TAMUS LSAMP Symposium is a mini conference that consists of several workshops, a poster session for TAMUS LSAMP and BTD students to make oral presentations and/or participate in poster presentations based on professor-guided research, and several keynote speakers who motivate and show the students that it is possible to succeed as an URM in STEM fields.



Above are pictures from the 5th Annual TAMUS LSAMP Symposium held at Texas A&M University - Corpus Christi on February 20, 2009. A highlight of the Symposium was the banquet held at the Texas State Aquarium.

Shannon Walton



Ph.D. Candidate
Interdisciplinary Studies

MS - Safety Engineering
Texas A&M University

BS - Industrial Engineering
Texas A&M University

Maxine Jones



Ph.D.
Chemical Engineering

BS - Chemical Engineering
Mississippi State University

Douglas Rodriguez



Ph.D. Candidate
Mechanical Engineering

MS - Mechanical Engineering
Texas A&M University

BS - Mechanical Engineering
Texas A&M University

Deborah Roman Santos



Ph.D.
Water Resources Engineering

MS - Natural Science
University of Puerto Rico

BS - Natural Science
University of Puerto Rico

Jessica Houston



Ph.D.
Chemical Engineering

MS - Chemical Engineering
Texas A&M University

BS - Chemical Engineering
New Mexico State University

Erica Reese Bruce



Ph.D.
Civil Engineering

MS - Civil Engineering
Texas A&M University

BS - Civil Engineering
Texas A&M University

Samuel Rodriguez



Ph.D. Candidate
Computer Engineering

BS - Computer Engineering
Texas A&M University

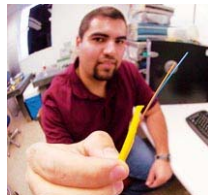
Migvia del C. Vidal



Ph.D.
Chemical Engineering

BS - Chemical Engineering
University of Puerto Rico

Juan Juarez



Ph.D.
Electrical Engineering

MS - Electrical Engineering
Texas A&M University

BS - Electrical Engineering
Texas A&M University

Julianna Camacho



Ph.D. Candidate
Environmental Engineering

MS - Environmental Engineering
Texas A&M University

BS - Chemical Engineering
University of Puerto Rico

BTD II - Texas A&M University

2004-2006

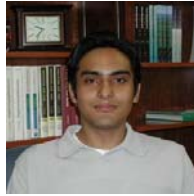
Aldo Gardea



MS Candidate
Entomology

BS - Entomology
Texas A&M University

Alfredo J. Hernandez



Ph.D. Candidate
Biochemistry

BS - Biochemistry
*University of Texas
Pan American*

Varrian D. Hall



MS
Computer Science

BS - Electrical Engineering
Mississippi State University

Dominique Elijah Watts



MS
Wildlife Science

BS - Wildlife Science
New Mexico State University

Javier Ramirez III



MS
Agriculture, Physiology of
Reproduction

BS - Agriculture, Physiology of
Reproduction
*Texas A&M University
Kingsville*

Jennifer Owens



Ph.D.
Applied Mathematics

BS - Applied Mathematics
University of Texas, Austin

Kimberly Jones Paulhill



Ph.D. Candidate
Nutritional Sciences

BS - Nutritional Sciences
Texas A&M University

Lindsay Nicole Birt



Ph.D. Candidate
Agricultural and Biological
Engineering
Purdue University

MS - Biological and Agricultural
Engineering

BS - Agricultural Engineering
Texas A&M University

Mayra I. Mendez Pinero



Ph.D. Candidate
Industrial Engineering

BS - Industrial Engineering
University of Puerto Rico

Takesha Y. Henderson



MS
Entomology

BS - Entomology
Texas A&M University

Vanessa Alyssa Chapa



Ph.D.
Analytical Chemistry

BS - Chemistry
Texas A&M University

Shantel Higgins



MS
Electrical Engineering

BS - Electrical Engineering
Vanderbilt University

BTD III - **Prairie View A&M University**

2005-2007

Tumeia Ford



MS
Mechanical Engineering

BS - Mechanical Engineering
Prairie View A&M University

Ebony Towns



MS
Mechanical Engineering

BS - Mechanical Engineering
Prairie View A&M University

Jolsone Augustin



MS Candidate
Computer Science

BS - Computer Science
University of Maryland

Jerrad Deason



MS Candidate
Chemical Engineering

BS - Chemical Engineering
Prairie View A&M University

Henry Lee III



MS
Electrical Engineering

BS - Electrical Engineering
Prairie View A&M University

Ebony Hawkins



MS
Mechanical Engineering

BS - Mechanical Engineering
Prairie View A&M University

Lamesha Johnson



Ph.D. Candidate
Mathematics
Rice University

BS, MS - Mathematics
Prairie View A&M University

Dana LeDoux



MS Candidate
Mathematics

BS - Mathematics
Prairie View A&M University

Crystal Robinson



MS Candidate
Electrical Engineering

BS - Electrical Engineering
Prairie View A&M University

Sharrone Marshall



MS Candidate
Electrical Engineering

BS - Electrical Engineering
Prairie View A&M University

Richard Tate



MS
Electrical Engineering

BS - Electrical Engineering
Prairie View A&M University

Randy Wilkins



Ph.D. Candidate
Mechanical Engineering
Texas A&M University

MS - Mechanical Engineering
Prairie View A&M University

BS - Mechanical Engineering
Prairie View A&M University

BTD IV - Texas A&M University

2006-2008

LaToya Anderson



MS
Industrial Engineering

BS - Applied Math Sciences
Texas A&M University

Andron Creary



MS
Mechanical Engineering

BS - Mechanical Engineering
Florida State University

Chinedu Ezeka



MS
Mechanical Engineering

BS - Mechanical Engineering
Prairie View A&M University

John Flores-McLaughlin



Ph.D. Candidate
Nuclear Engineering

BS - Nuclear Engineering
Texas A&M University

Eyleen Hernandez



MS
Industrial Engineering

BS - Industrial Engineering
University of Florida

Justin Jackson



Ph.D. Candidate
Aerospace Engineering
Georgia Tech

MS - Aerospace Engineering
Texas A&M University

BS - Maritime Sys. Engineering
*Texas A&M University
Galveston*

Maya Johnson



Ph.D. Candidate
Mathematics

BS - Mathematics
Lincoln University

Marcos Lopez



MS Candidate
Electrical Engineering

BS - Electrical Engineering
*University of Puerto Rico
Mayaguez*

Ivory Mayhorn III



ME
Computer Engineering

BS - Computer Science
Prairie View A&M University

Jean Njoroge



Ph.D. Candidate
Material Science & Engineering

BS - Chemical Engineering
Prairie View A&M University

Aracely Rocha



Ph.D. Candidate
Mechanical Engineering

BS - Mechanical Engineering
*University of Texas
Pan America*

Jacob Torres



Ph.D. Candidate
Civil Engineering
John Hopkins University

MS - Civil Engineering
Texas A&M University

BS - Civil Engineering
Texas A&M University

BTD V - Texas A&M University

2008-2010

Kevin Gagnon



Ph.D. Student
Chemistry

BS - Chemistry
Worcester Polytechnic Institute

Roberto Gamez



Ph.D. Student
Chemistry

BS - Chemistry
University of Texas Pan American

Tanya Garcia



Ph.D. Student
Statistics

BS - Mathematics
University of California, Irvine

Casie Hilliard



Ph.D. Student
Chemistry

BS - Chemistry
University of Florida

Rafael Huacuja



Ph.D. Student
Chemistry

BS - Chemistry
Cornell University

Tiffany Kinnibrugh



Ph.D. Student
Chemistry

BS - Mathematics
New Mexico Highlands University

Roy Montalvo



Ph.D. Student
Physics

BS - Physics/Mathematics
Stony Brook University

Michelle Myers



Ph.D. Student
Electrical Engineering

BS - Physics and Astronomy
Ohio State University

Jorge Restrepo



Ph.D. Student
Chemistry

BS - Chemistry
Florida International University

Jennifer Rolfes



Ph.D. Student
Statistics

BS - Mathematics
University of Nevada Las Vegas

Karen Triff



Ph.D. Student
Biology

BS - Biological Sciences
Florida International University

Texas A&M University

TAMUS LSAMP Central Office
218 Wisenbaker Engineering Research Center (WERC)
3405 TAMU
College Station, TX 77843-3405
(979) 845-0778
(979) 862-1267

Dr. Karan L. Watson
Principal Investigator

Dr. Karen Butler-Purry
Co-Principal Investigator / TAMUS LSAMP Director

Mrs. Shannon Walton
TAMUS LSAMP Associate Director / BTD Coordinator

Prairie View A&M University

College of Engineering
SR Collins Building, Room 340
L. W. Martin Street
P.O. Box 519, MS 2502
Prairie View, TX 77446
(936) 261-9896
(936) 261-9868

Dr. Kendal Harris
Co-Principal Investigator / BTD Coordinator

Texas A&M University – Corpus Christi

College of Science & Technology
6300 Ocean Drive, Unit 5824
Corpus Christi, TX 78412-5824
(361) 825-3622
(361) 825-2795

Dr. Frank Pezold
Co-Principal Investigator

Dr. John Fernandez
TAMU-CC LSAMP Coordinator

Mrs. Liza Wisner
TAMU-CC LSAMP Assistant

